

EVELYN

by ONNI

TOWNHOMES AT EVELYN WALK

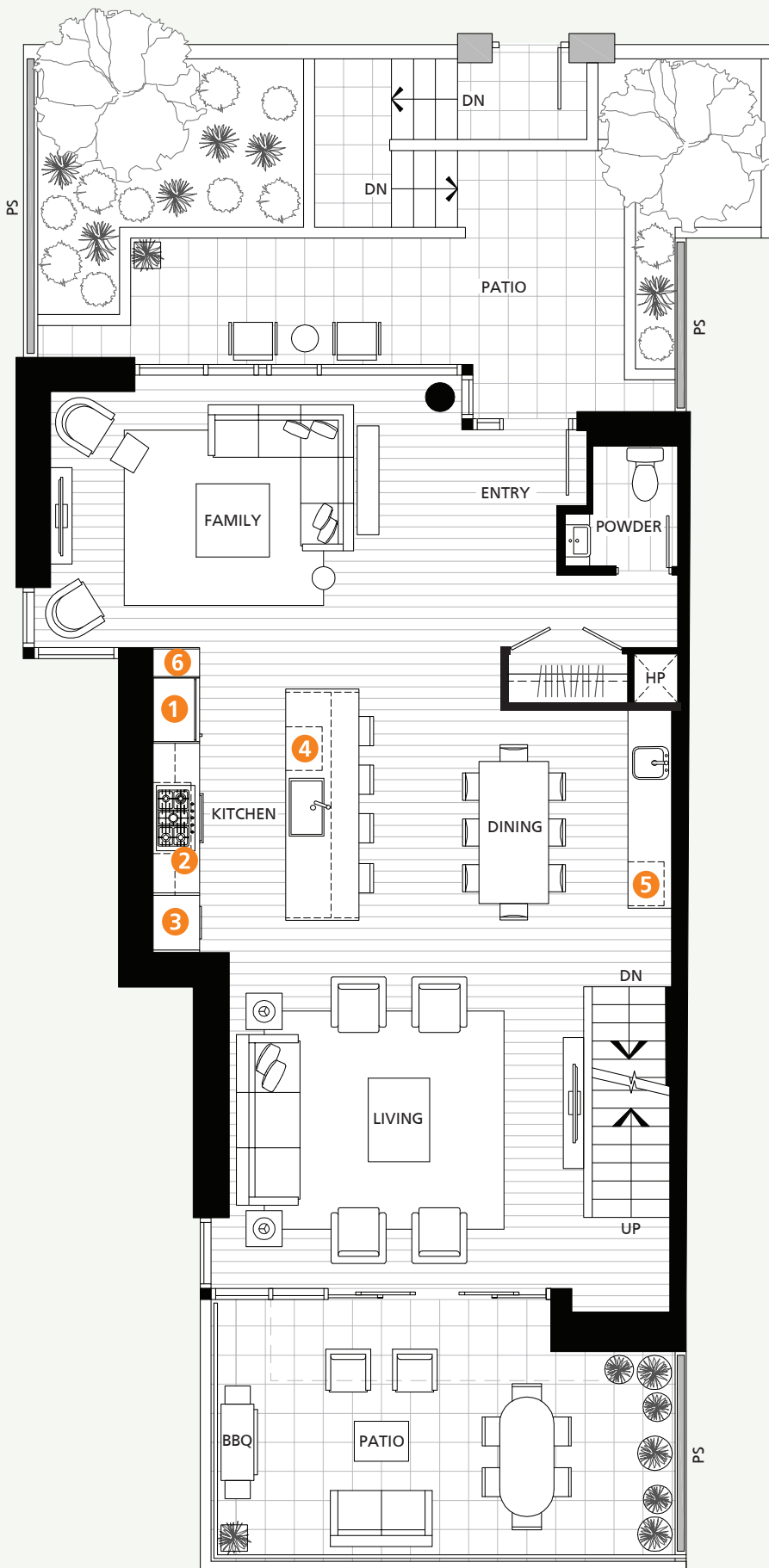
PLAN THB | 4 Bedroom + Family Room

TOTAL AREA 2,865 SF

2,410 SF
INDOOR AREA

455 SF
OUTDOOR AREA

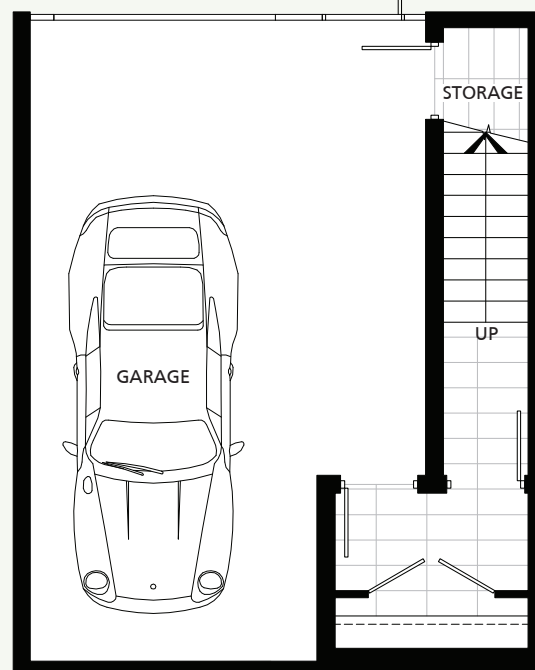
- 1 36" Sub Zero Integrated Refrigerator
- 2 36" Wolf Gas Cooktop + Faber Integrated Hood Fan
- 3 30" Wolf Convection Wall Oven + Panasonic Microwave
- 4 Cove Integrated Dishwasher
- 5 24" Sub Zero Integrated Under-Counter Wine Fridge
- 6 Pantry
- 7 High-Efficiency Full Size Washer and Dryer



MAIN FLOOR



2nd FLOOR



GARAGE

