

# EVELYN

by ONNI

## PLAN A AT FOREST'S-EDGE THREE & FOUR

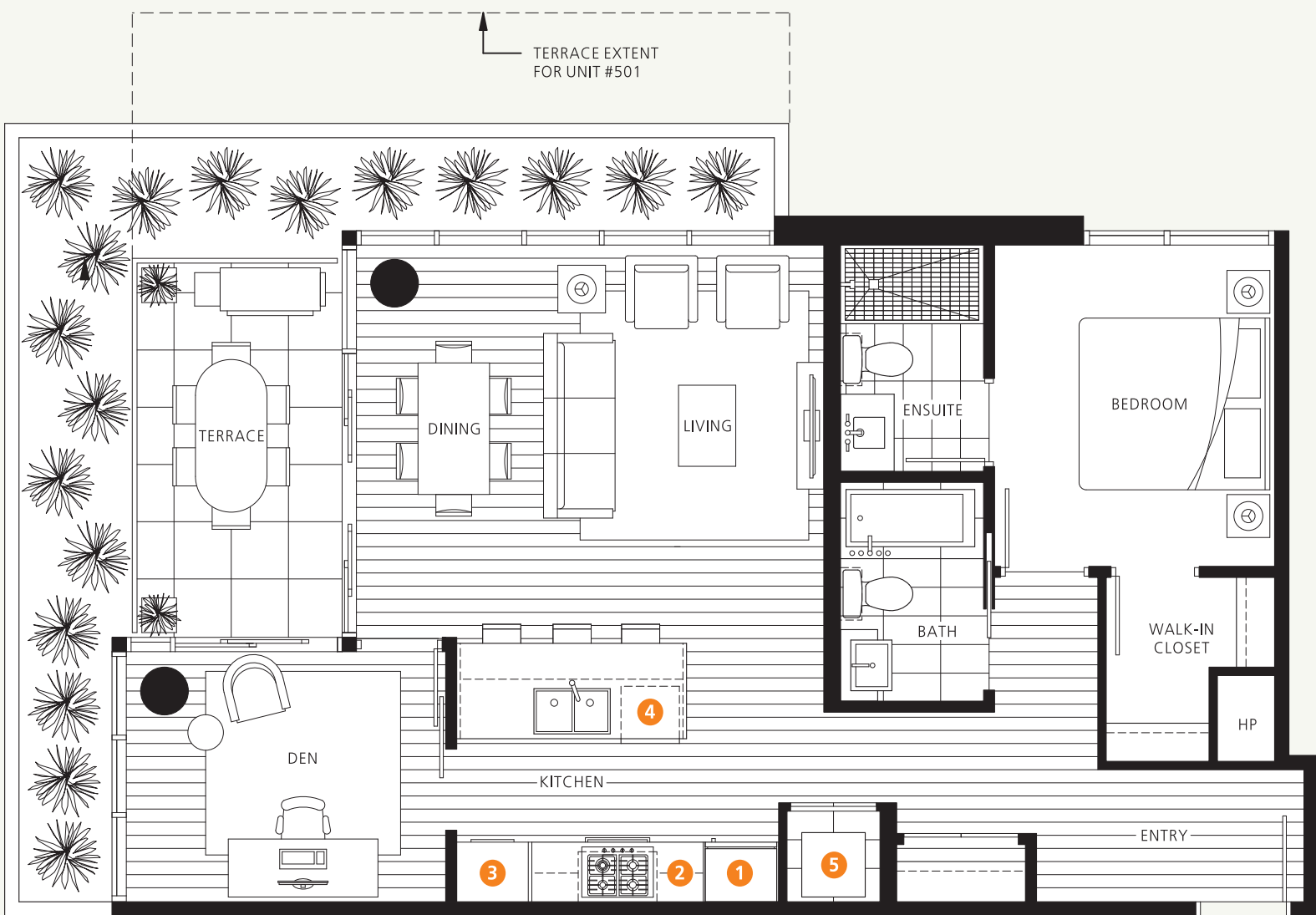
1 Bedroom + Den

865-870 SF Living (APPROX.)

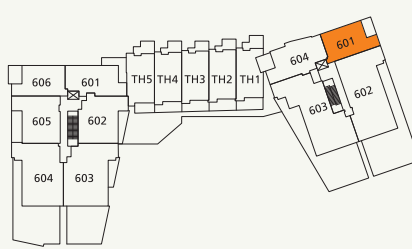
95-285 SF Outdoor (APPROX.)

960-1,155 SF Total (APPROX.)

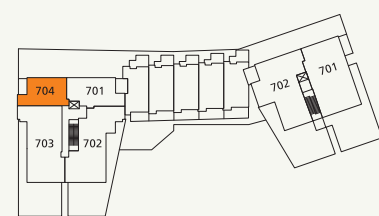
- 1 30" Sub-Zero Integrated Refrigerator
- 2 30" Miele Gas Cooktop + Faber Slim Line Hood Fan
- 3 30" Miele Convection Wall Oven + Panasonic Microwave
- 4 Asko Integrated Dishwasher
- 5 High-Efficiency Full Size Washer and Dryer



AT FOREST'S-EDGE THREE/FOUR  
5th FLOOR



AT FOREST'S-EDGE THREE/FOUR  
6th FLOOR



AT FOREST'S-EDGE THREE/FOUR  
7th FLOOR

# EVELYN

by ONNI

## PLAN B AT FOREST'S-EDGE THREE & FOUR

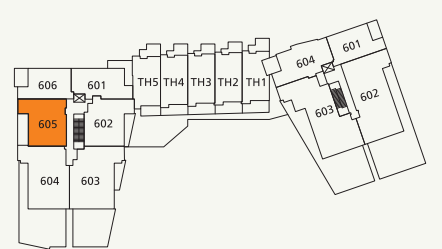
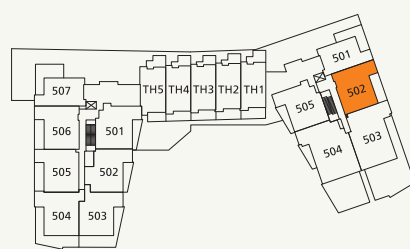
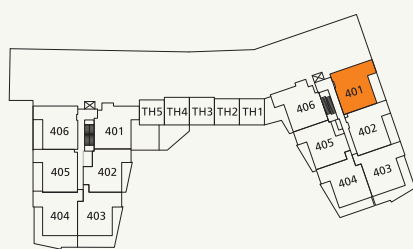
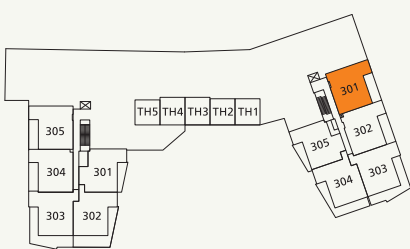
2 Bedroom + Den

1,125-1,145 SF Living (APPROX.)

170-175 SF Outdoor (APPROX.)

1,295-1,320 SF Total (APPROX.)

- 1 36" Sub-Zero Integrated Refrigerator
- 2 30" Miele Gas Cooktop + Faber Slim Line Hood Fan
- 3 30" Miele Convection Wall Oven + Panasonic Microwave
- 4 Asko Integrated Dishwasher
- 5 High-Efficiency Full Size Washer and Dryer



# EVELYN

by ONNI

## PLAN B1 AT FOREST'S-EDGE THREE & FOUR

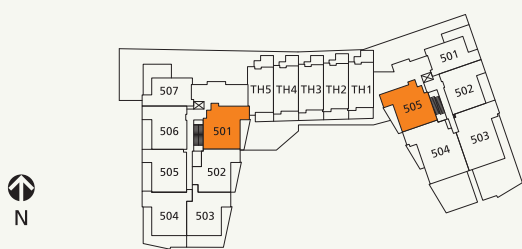
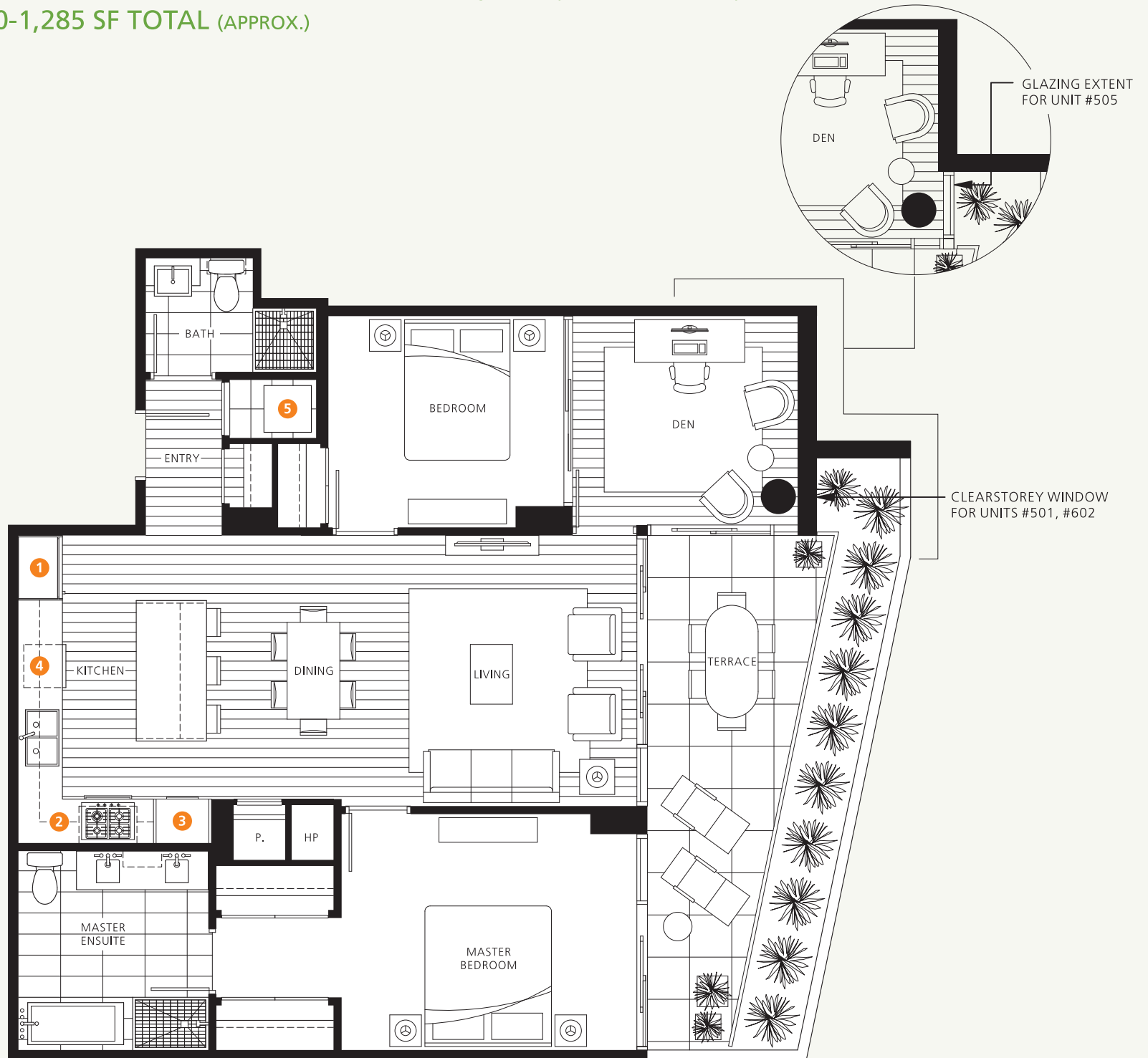
2 BEDROOM + DEN

1,125-1,140 SF LIVING (APPROX.)

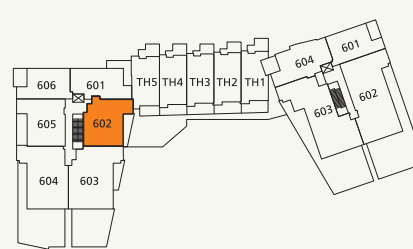
145 SF OUTDOOR (APPROX.)

1,270-1,285 SF TOTAL (APPROX.)

- 1 36" Sub-zero Integrated Refrigerator
- 2 30" Miele Gas Cooktop + Faber Slim Line Hood Fan
- 3 30" Miele Convection Wall Oven + Panasonic Microwave
- 4 Asko Integrated Dishwasher
- 5 High-efficiency Full Size Washer and Dryer



AT FOREST'S-EDGE THREE/FOUR  
5TH FLOOR



AT FOREST'S-EDGE THREE/FOUR  
6TH FLOOR

# EVELYN

by ONNI

## PLAN B2 AT FOREST'S-EDGE THREE & FOUR

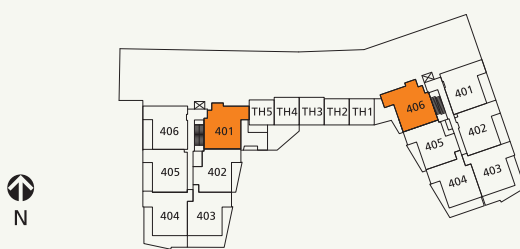
2 Bedroom + Den

1,170 SF Living (APPROX.)

285-400 SF Outdoor (APPROX.)

1,455-1,570 SF Total (APPROX.)

- 1 36" Sub-Zero Integrated Refrigerator
- 2 30" Miele Gas Cooktop + Faber Slim Line Hood Fan
- 3 30" Miele Convection Wall Oven + Panasonic Microwave
- 4 Asko Integrated Dishwasher
- 5 High-Efficiency Full Size Washer and Dryer



AT FOREST'S-EDGE THREE/FOUR  
4th FLOOR

# EVELYN

by ONNI

## PLAN B3 AT FOREST'S-EDGE THREE & FOUR

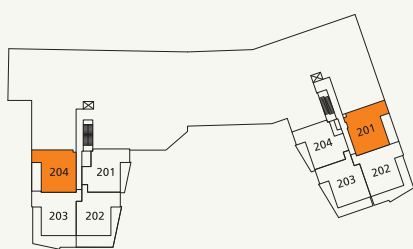
2 Bedroom + Den

1,125-1,135 SF Living (APPROX.)

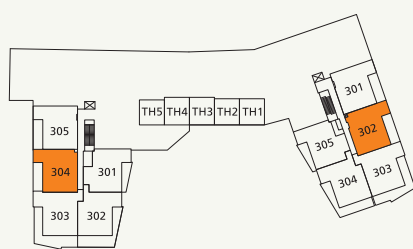
170-175 SF Outdoor (APPROX.)

1,295-1,310 SF Total (APPROX.)

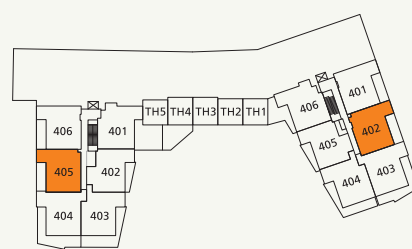
- 1 36" Sub-Zero Integrated Refrigerator
- 2 30" Miele Gas Cooktop + Faber Slim Line Hood Fan
- 3 30" Miele Convection Wall Oven + Panasonic Microwave
- 4 Asko Integrated Dishwasher
- 5 High-Efficiency Full Size Washer and Dryer



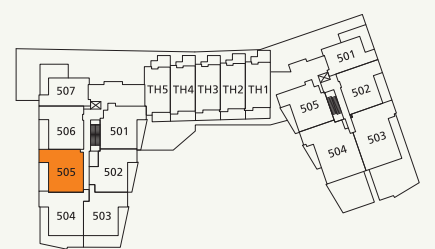
AT FOREST'S-EDGE THREE/FOUR  
2nd FLOOR



AT FOREST'S-EDGE THREE/FOUR  
3rd FLOOR



AT FOREST'S-EDGE THREE/FOUR  
4th FLOOR



AT FOREST'S-EDGE THREE/FOUR  
5th FLOOR

# EVELYN

by ONNI

## PLAN C AT FOREST'S-EDGE THREE & FOUR

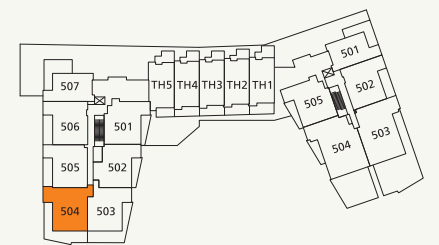
2 Bedroom + Den

1,195-1,210 SF Living (APPROX.)

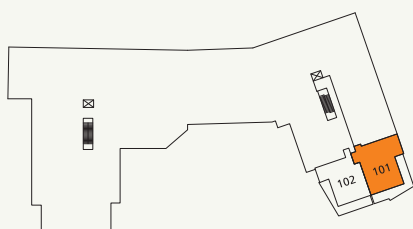
440-510 SF Outdoor (APPROX.)

1,635-1,705 SF Total (APPROX.)

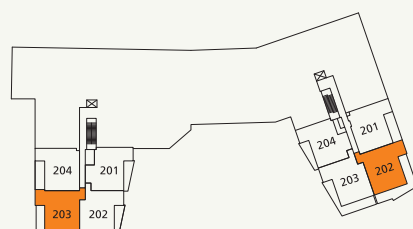
- 1 30" Sub-Zero Integrated Refrigerator
- 2 30" Miele Gas Cooktop + Faber Slim Line Hood Fan
- 3 30" Miele Convection Wall Oven + Panasonic Microwave
- 4 Asko Integrated Dishwasher
- 5 High-Efficiency Full Size Washer and Dryer



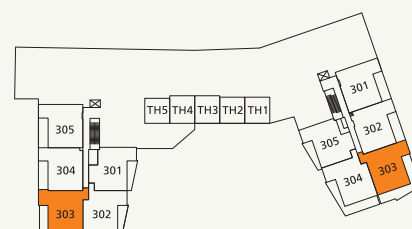
AT FOREST'S-EDGE THREE/FOUR  
5TH FLOOR



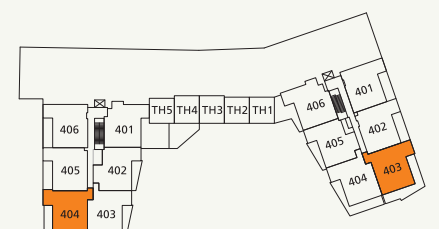
AT FOREST'S-EDGE THREE/FOUR  
1st FLOOR



AT FOREST'S-EDGE THREE/FOUR  
2nd FLOOR



AT FOREST'S-EDGE THREE/FOUR  
3rd FLOOR



AT FOREST'S-EDGE THREE/FOUR  
4th FLOOR



# EVELYN

by ONNI

## PLAN C1 AT FOREST'S-EDGE THREE & FOUR

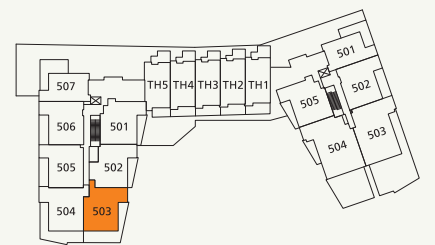
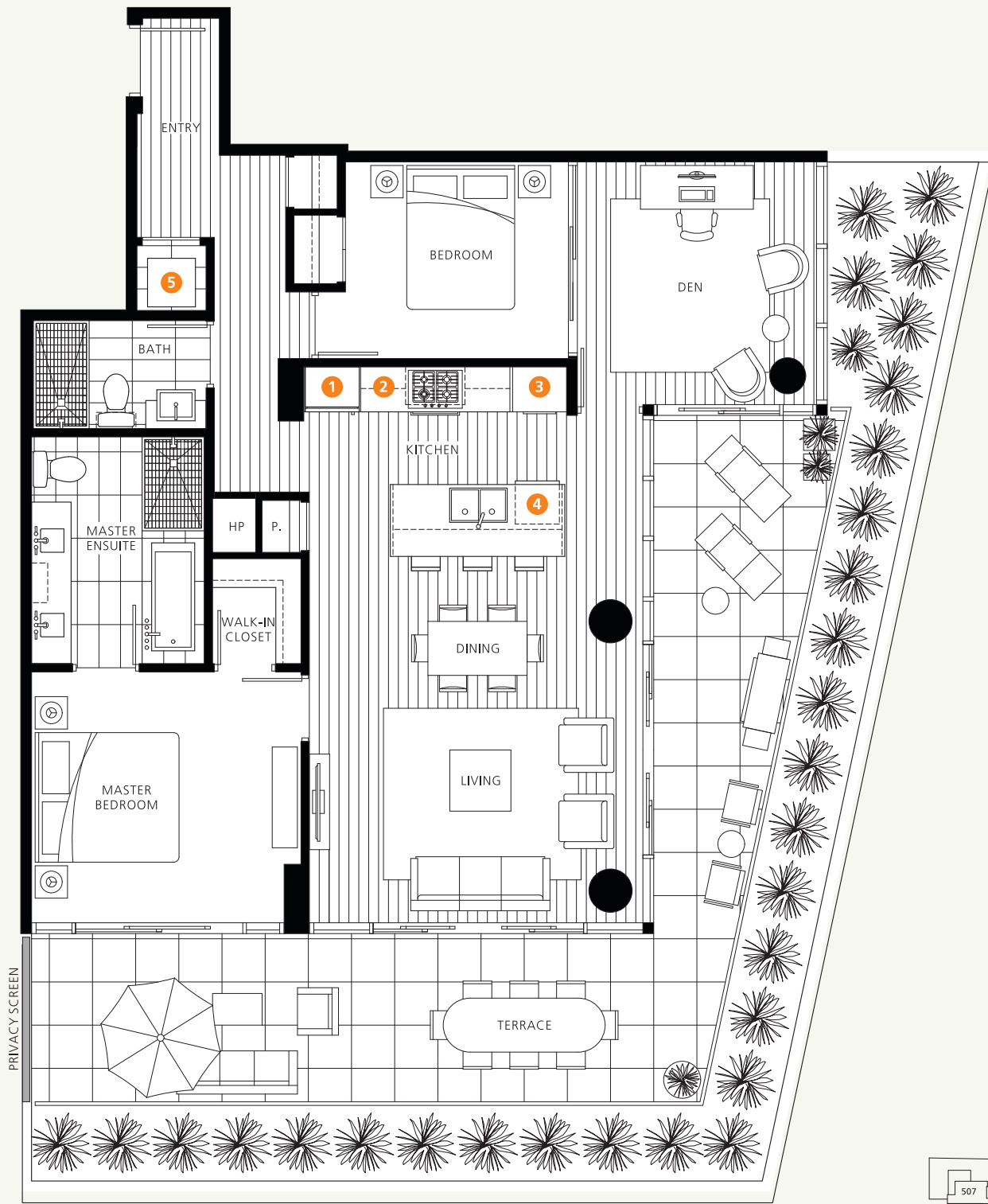
2 Bedroom + Den

1,130-1,145 SF Living (APPROX.)

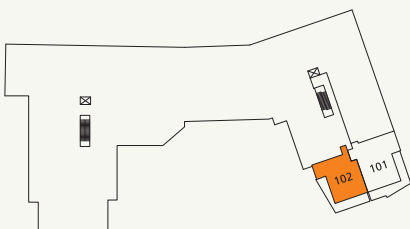
395-460 SF Outdoor (APPROX.)

1,525-1,590 SF Total (APPROX.)

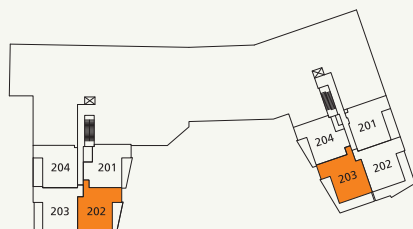
- 1 30" Sub-Zero Integrated Refrigerator
- 2 30" Miele Gas Cooktop + Faber Slim Line Hood Fan
- 3 30" Miele Convection Wall Oven + Panasonic Microwave
- 4 Asko Integrated Dishwasher
- 5 High-Efficiency Full Size Washer and Dryer



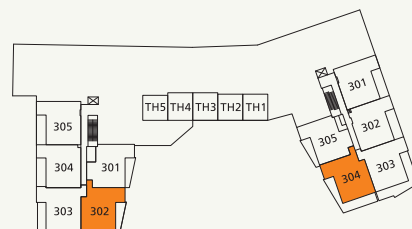
AT FOREST'S-EDGE THREE/FOUR  
5TH FLOOR



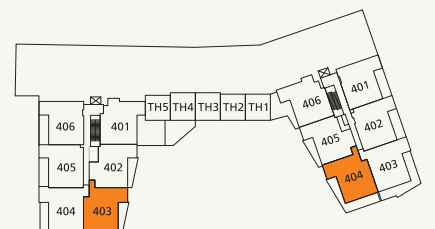
AT FOREST'S-EDGE THREE/FOUR  
1st FLOOR



AT FOREST'S-EDGE THREE/FOUR  
2nd FLOOR



AT FOREST'S-EDGE THREE/FOUR  
3rd FLOOR



AT FOREST'S-EDGE THREE/FOUR  
4th FLOOR



# EVELYN

by ONNI

## PLAN D AT FOREST'S-EDGE THREE & FOUR

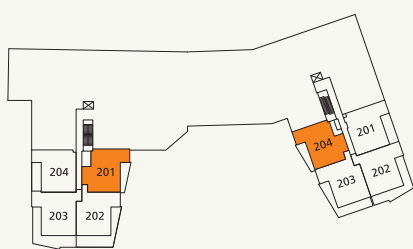
2 Bedroom

1,085-1,100 SF Living (APPROX.)

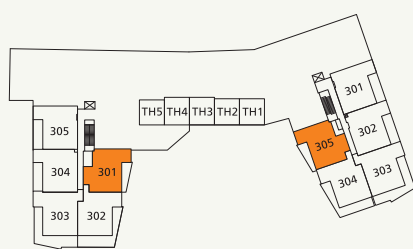
155 SF Outdoor (APPROX.)

1,240-1,255 SF Total (APPROX.)

- 1 30" Sub-Zero Integrated Refrigerator
- 2 30" Miele Gas Cooktop + Faber Slim Line Hood Fan
- 3 30" Miele Convection Wall Oven + Panasonic Microwave
- 4 Asko Integrated Dishwasher
- 5 High-Efficiency Full Size Washer
- 6 High-Efficiency Full Size Dryer



AT FOREST'S-EDGE THREE/FOUR  
2nd FLOOR



AT FOREST'S-EDGE THREE/FOUR  
3rd FLOOR



AT FOREST'S-EDGE THREE/FOUR  
4th FLOOR



AT FOREST'S-EDGE THREE/FOUR  
5th FLOOR



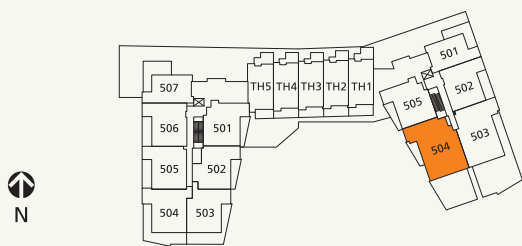
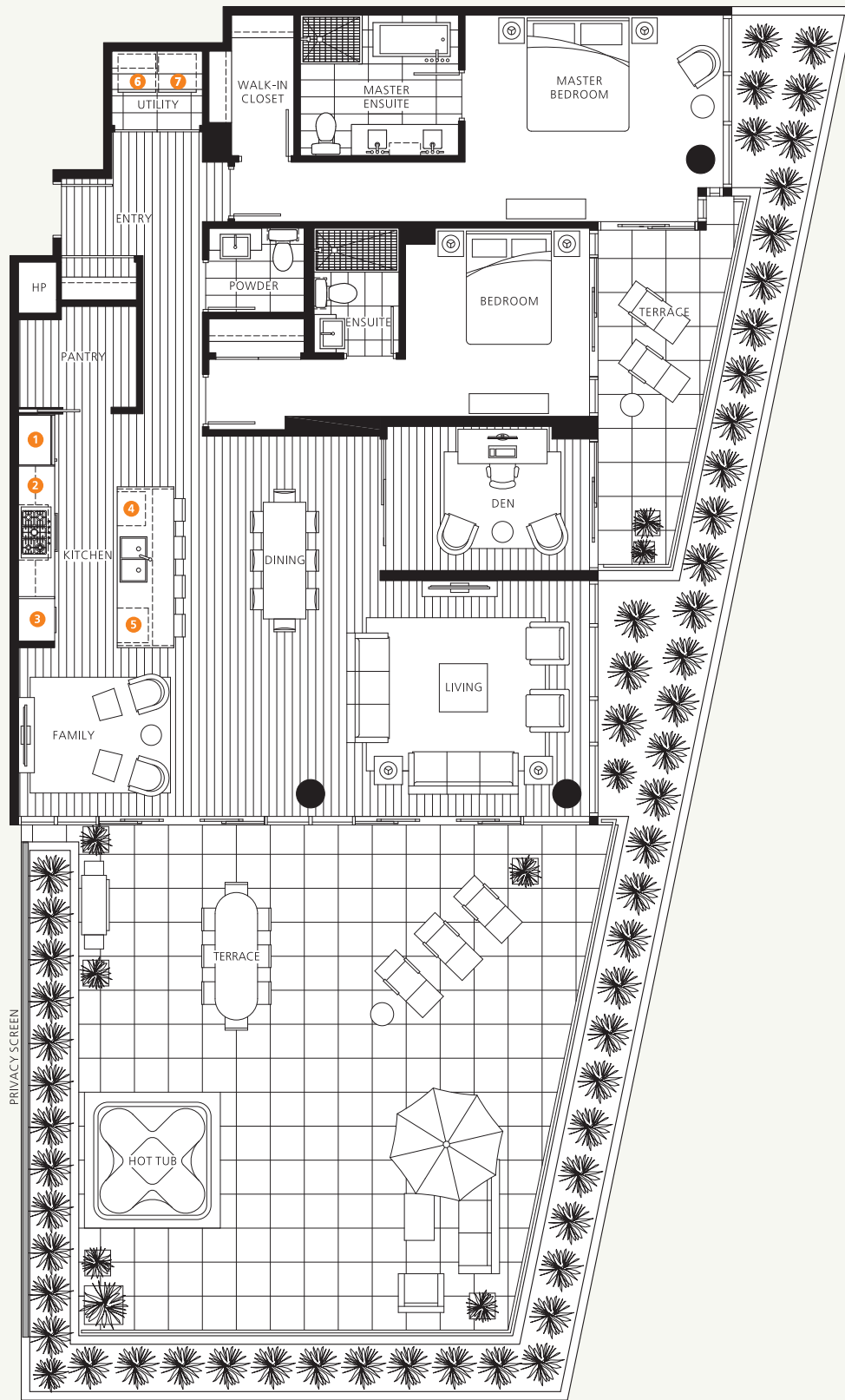
# EVELYN

by ONNI

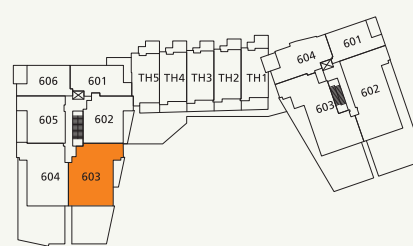
## PLAN E AT FOREST'S-EDGE THREE & FOUR

2 Bedroom + Den + Family  
 1,670 SF Living (APPROX.)  
 955-1,010 SF Outdoor (APPROX.)  
 2,625-2,680 SF Total (APPROX.)

- 1 36" Sub-Zero Integrated Refrigerator
- 2 36" Miele Gas Cooktop + Faber Slim Line Hood Fan
- 3 30" Miele Convection Wall Oven + Panasonic Microwave
- 4 Asko Integrated Dishwasher
- 5 Sub-Zero Integrated Under-Counter Wine Fridge
- 6 High-Efficiency Full Size Washer
- 7 High-Efficiency Full Size Dryer



AT FOREST'S-EDGE THREE/FOUR  
5th FLOOR



AT FOREST'S-EDGE THREE/FOUR  
6th FLOOR

# EVELYN

by ONNI

## PLAN E1 AT FOREST'S-EDGE THREE & FOUR

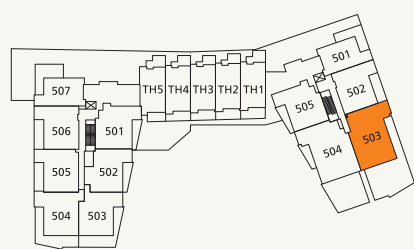
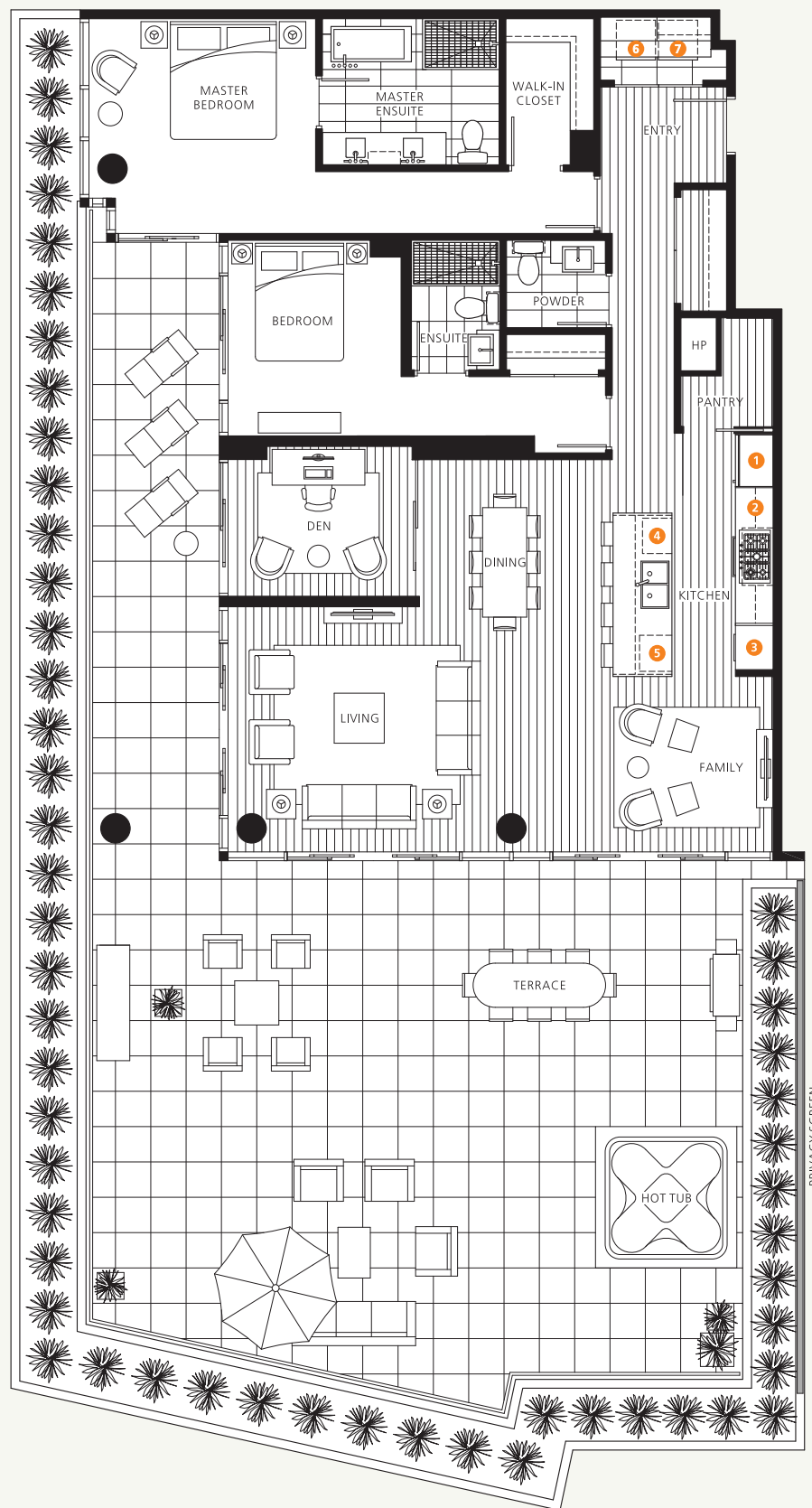
2 Bedroom + Den + Family

1,580 SF Living (APPROX.)

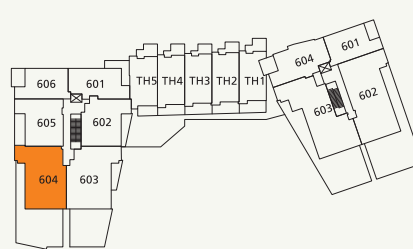
1,230-1,300 SF Outdoor (APPROX.)

2,810-2,880 SF Total (APPROX.)

- 1 36" Sub-Zero Integrated Refrigerator
- 2 36" Miele Gas Cooktop + Faber Slim Line Hood Fan
- 3 30" Miele Convection Wall Oven + Panasonic Microwave
- 4 Asko Integrated Dishwasher
- 5 Sub-Zero Integrated Under-Counter Wine Fridge
- 6 High-Efficiency Full Size Washer
- 7 High-Efficiency Full Size Dryer



AT FOREST'S-EDGE THREE/FOUR  
5th FLOOR



AT FOREST'S-EDGE THREE/FOUR  
6th FLOOR



# EVELYN

by ONNI

## PLAN F AT FOREST'S-EDGE THREE & FOUR

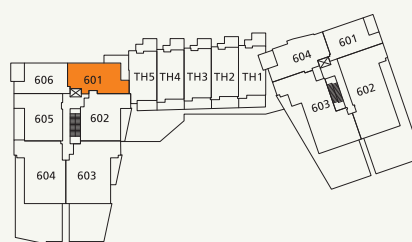
1 Bedroom + Den

1,010 SF Living (APPROX.)

165 SF Outdoor (APPROX.)

1,175 SF Total (APPROX.)

- 1 30" Sub-Zero Integrated Refrigerator
- 2 30" Miele Gas Cooktop + Faber Slim Line Hood Fan
- 3 30" Miele Convection Wall Oven + Panasonic Microwave
- 4 Asko Integrated Dishwasher
- 5 High-Efficiency Full Size Washer
- 6 High-Efficiency Full Size Dryer



AT FOREST'S-EDGE THREE/FOUR  
6th FLOOR

# EVELYN

by ONNI

## PLAN F 1 AT FOREST'S-EDGE THREE & FOUR

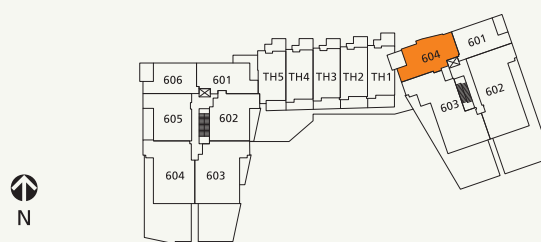
1 Bedroom + Den

1,040 SF Living (APPROX.)

140 SF Outdoor (APPROX.)

1,180 SF Total (APPROX.)

- 1 30" Sub-Zero Integrated Refrigerator
- 2 30" Miele Gas Cooktop + Faber Slim Line Hood Fan
- 3 30" Miele Convection Wall Oven + Panasonic Microwave
- 4 Asko Integrated Dishwasher
- 5 High-Efficiency Full Size Washer
- 6 High-Efficiency Full Size Dryer



AT FOREST'S-EDGE THREE/FOUR  
6th FLOOR

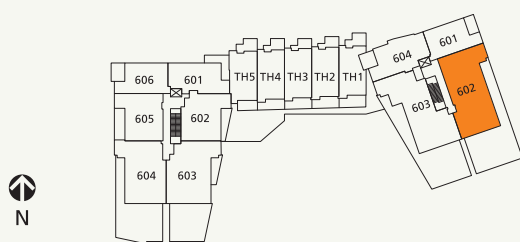
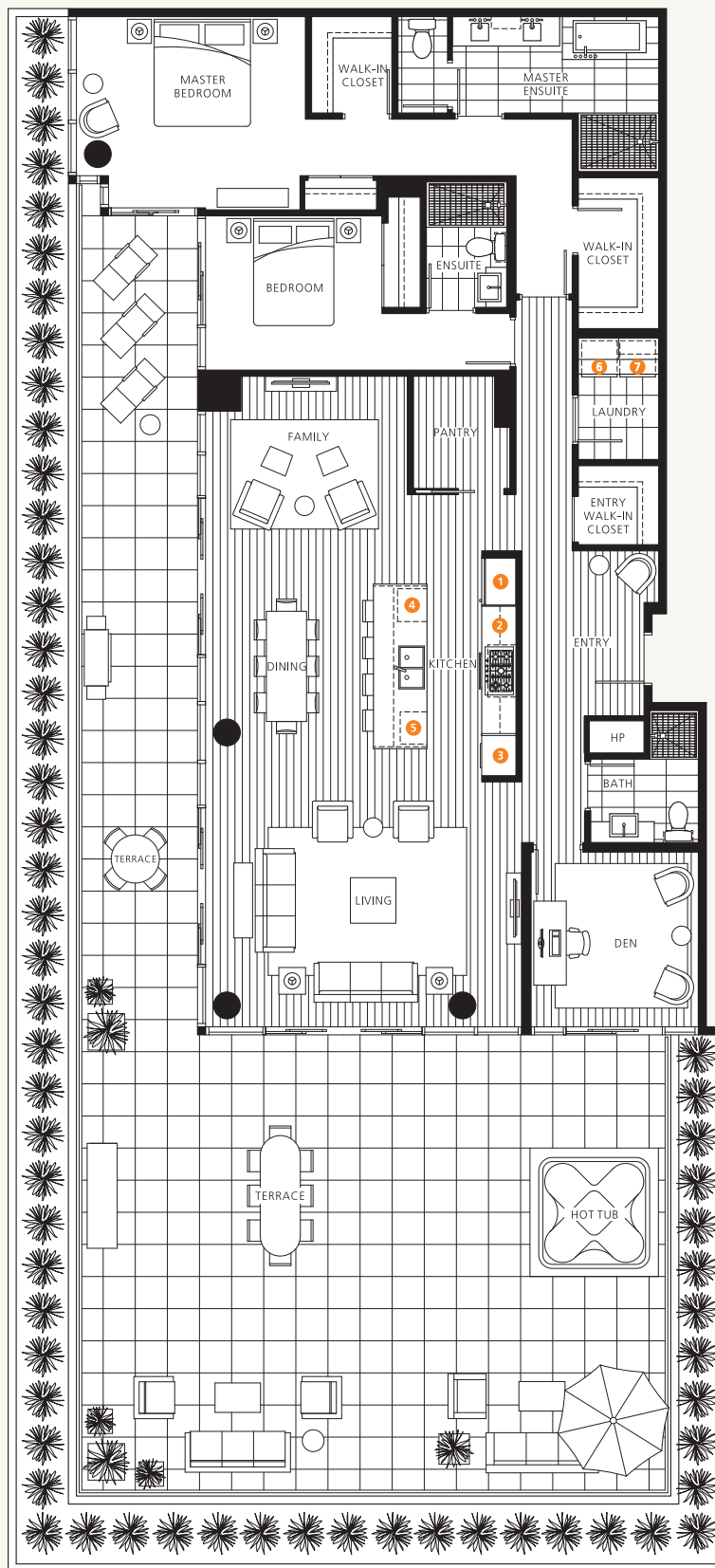
# EVELYN

by ONNI

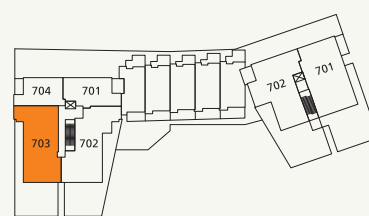
## PLAN G AT FOREST'S-EDGE THREE & FOUR

2 Bedroom + Den + Family  
 1,995 SF Living (APPROX.)  
 1,395 SF Outdoor (APPROX.)  
 3,390 SF Total (APPROX.)

- 1 36" Sub-Zero Integrated Refrigerator
- 2 36" Miele Gas Cooktop + Faber Slim Line Hood Fan
- 3 30" Miele Convection Wall Oven + Panasonic Microwave
- 4 Asko Integrated Dishwasher
- 5 Sub-Zero Integrated Under-Counter Wine Fridge
- 6 High-Efficiency Full Size Washer
- 7 High-Efficiency Full Size Dryer



AT FOREST'S-EDGE THREE/FOUR  
6th FLOOR



AT FOREST'S-EDGE THREE/FOUR  
7th FLOOR

# EVELYN

by ONNI

## PLAN H AT FOREST'S-EDGE THREE & FOUR

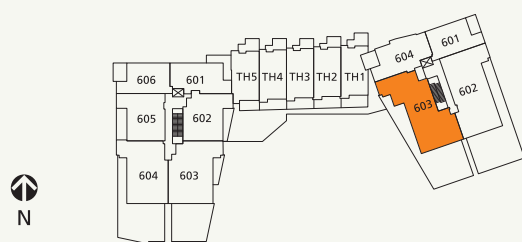
2 Bedroom + Den + Family

1,945 SF Living (APPROX.)

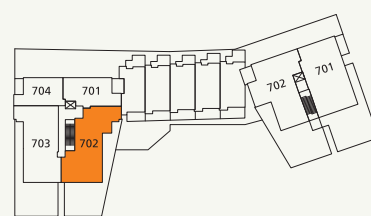
1,445-1,450 SF Outdoor (APPROX.)

3,390-3,395 SF Total (APPROX.)

- 1 36" Sub-Zero Integrated Refrigerator
- 2 36" Miele Gas Cooktop + Faber Slim Line Hood Fan
- 3 30" Miele Convection Wall Oven + Panasonic Microwave
- 4 Asko Integrated Dishwasher
- 5 Sub-zero Integrated Under-Counter Wine Fridge
- 6 Stacked High-Efficiency Full Size Washer and Dryer



AT FOREST'S-EDGE THREE/FOUR  
6th FLOOR



AT FOREST'S-EDGE THREE/FOUR  
7th FLOOR

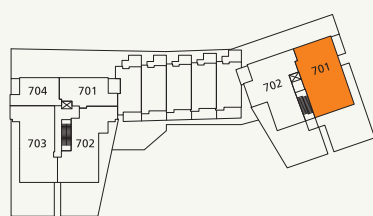
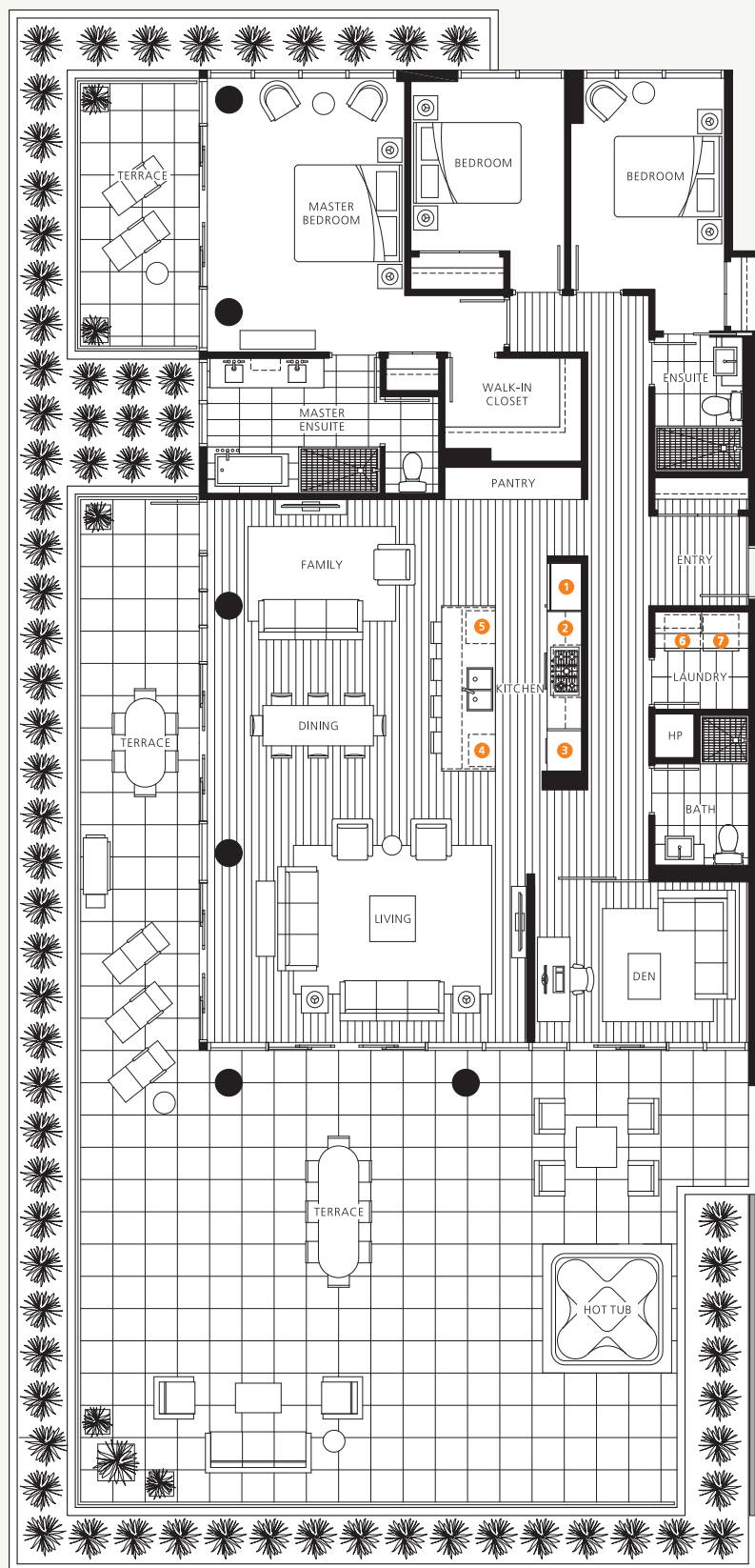
# EVELYN

by ONNI

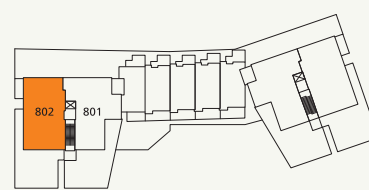
## PLAN J AT FOREST'S-EDGE THREE & FOUR

3 Bedroom + Den + Family  
 2,060 SF Living (APPROX.)  
 1,580 SF Outdoor (APPROX.)  
 3,640 SF Total (APPROX.)

- 1 36" Sub-Zero Integrated Refrigerator
- 2 36" Miele Gas Cooktop + Faber Slim Line Hood Fan
- 3 30" Miele Convection Wall Oven + Panasonic Microwave
- 4 Asko Integrated Dishwasher
- 5 Sub-Zero Integrated Under-Counter Wine Fridge
- 6 High-Efficiency Full Size Washer
- 7 High-Efficiency Full Size Dryer



AT FOREST'S-EDGE THREE/FOUR  
7th FLOOR



AT FOREST'S-EDGE THREE/FOUR  
8th FLOOR

# EVELYN

by ONNI

## PLAN K AT FOREST'S-EDGE THREE & FOUR

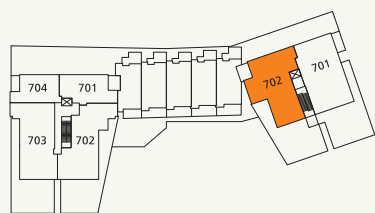
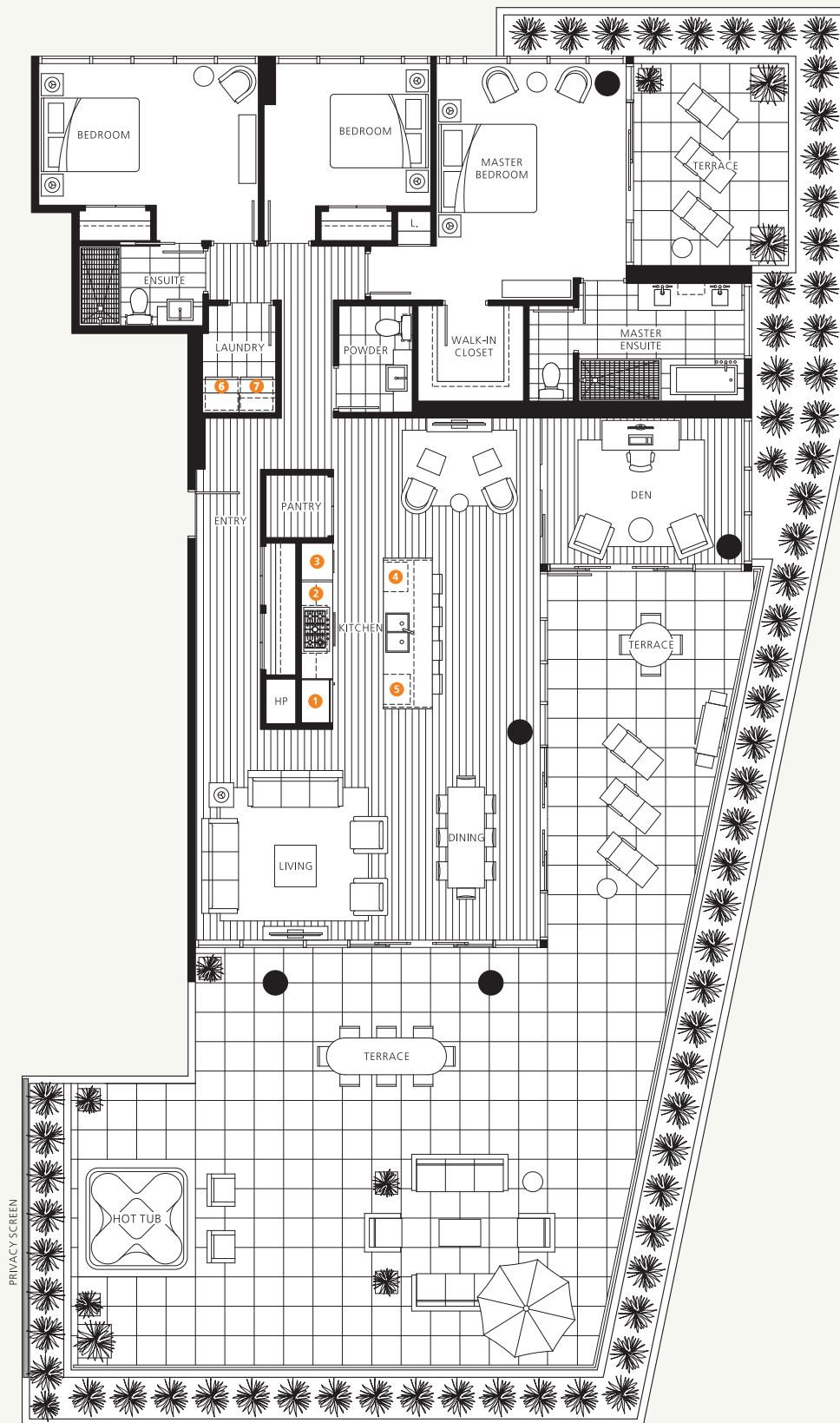
3 Bedroom + Den + Family

2,005 SF Living (APPROX.)

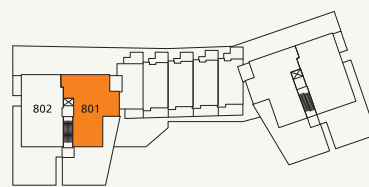
1,585-1,630 SF Outdoor (APPROX.)

3,590-3,635 SF Total (APPROX.)

- 1 36" Sub-Zero Integrated Refrigerator
- 2 36" Miele Gas Cooktop + Faber Slim Line Hood Fan
- 3 30" Miele Convection Wall Oven + Panasonic Microwave
- 4 Asko Integrated Dishwasher
- 5 Sub-Zero Integrated Under-Counter Wine Fridge
- 6 High-Efficiency Full Size Washer
- 7 High-Efficiency Full Size Dryer



AT FOREST'S-EDGE THREE/FOUR  
7th FLOOR



AT FOREST'S-EDGE THREE/FOUR  
8th FLOOR



# EVELYN

by ONNI

## PLAN TH AT FOREST'S-EDGE THREE & FOUR

2 Bedroom + Den  
 1,730-1,765 SF Living (APPROX.)  
 250-320 SF Outdoor (APPROX.)  
 1,990-2,085 SF Total (APPROX.)

- 1 36" Sub-Zero Integrated Refrigerator
- 2 36" Miele Gas Cooktop + Faber Slim Line Hood Fan
- 3 30" Miele Convection Wall Oven + Panasonic Microwave
- 4 Asko Integrated Dishwasher
- 5 Sub-zero Integrated Under-Counter Wine Fridge
- 6 High-Efficiency Full Size Washer and Dryer



AT FOREST'S-EDGE THREE/FOUR TOWNHOMES

Dimensions, square footage and floorplans are approximate only. Final dimensions, square footage and floorplans may vary and will be determined by final strata plan measurements. Final floorplans may be a mirror image of the floorplans shown above. The Developer reserves the right to make changes to the floorplans, project design, appliances, specifications, and features. E.&O.E.