

*Eve*LYN

by ONNI



Evelyn Single Family Homes

Gracefully positioned on Sentinel Hill's rise in West Vancouver, these southwest-facing private residences are laid out over three levels and embrace the architectural principles of West Coast Modernism. Their design incorporates natural materials native to the surroundings and expansive patios offer seamless indoor and outdoor living year-round.



Evelyn **by ONNI**



SINGLE FAMILY HOMES

SOLD OUT

SOLD OUT

SOLD OUT

SOLD OUT

TOWNHOMES AT EVELYN WALK

AT FOREST'S EDGE THREE & FOUR

SOLD OUT

EVELYN WALK

SOLD OUT

SOLD OUT



N

Single Family Homes

3 Bedroom + Family | 3 Bath

Interior: 2,425 - 2,720 sf

Exterior: 755 sf

Total: 3,180 - 3,475 sf



Interior Features



TIMELESS DESIGN

- Premium wide-plank, engineered oak hardwood flooring
- Oversized stained wood veneer interior doors
- Automated lighting control in living areas
- Automated sound control with built-in speakers in kitchen
- Contemporary glass wall-enclosed stairs for ultimate open plan living
- Flat painted ceiling with recessed pot lighting throughout
- Sleek roller shades with remote control operation
- Full size high efficiency front loading washer and dryer with laundry sink and cabinet for organizing
- Generous in-suite storage in all bedrooms with multiple oversized his and hers closets featuring contemporary flat panel doors, modern brushed nickel door hardware and upgraded wood-look closet organizers
- Forced air heating and cooling
- Spacious two car garage with ample storage
- Expansive outdoor living areas are equipped with water, gas and power connections

SPACIOUS KITCHENS

- Designer appliance kitchens
 - Sub-Zero 36" wood-paneled integrated fridge with dual freezer drawers at the bottom
 - Sub-Zero 30" full sized integrated wine storage with refrigerator drawers for other beverages
 - Wolf 36" gas range with 6 burners
 - Cove 24" full size wood-paneled integrated dishwasher
 - Faber 36" low-profile slide out 3 speed hood fan
 - Panasonic stainless steel under counter microwave with trim kit
- Natural stone quartzite with breakfast bar overhang and stone waterfall on oversized islands
- Full height stone backsplash to match countertops
- European-inspired flat panel wood cabinets with accent painted upper cabinets
 - Cypress scheme - stained ash veneer and white satin painted cabinets
 - Hollyburn scheme - stained walnut and ivory grey satin painted cabinets
- Soft close mechanism on all kitchen doors and drawers
- Double bowl stainless steel under mounted sink with polished chrome kitchen faucet with extractable spray and in-sink waste disposal
- Under cabinet recessed LED strip lighting to illuminate workspace
- Plug-in USB outlet included in the kitchen for convenient charging of your smartphone or electronic device
- Second family room with wetbar
 - Kitchenette available as an upgrade

Interior Features



ELEGANT BATHROOMS

- All bathrooms
 - Nuheat electric floor heating system with signature touchscreen and wireless control
 - Generously sized floating vanity features polished natural stone countertops and under mount wash basin, wood veneer cabinets, soft close drawers, and motion controlled under cabinet accent lighting
 - Oversized walk-in showers encased in frameless glass and floor-to-ceiling marble tile feature hidden tile drain, rain shower head, and hand shower on slide bar
 - Water-conserving elongated toilet
 - Polished chrome bathroom accessories
- Master ensuite
 - Honed limestone tile floor and walls, oversized dual vanity and enclosed toilet for added privacy
 - In-wall back-lit medicine cabinet behind vanity mirror for convenient storage
 - Freestanding soaker tub with floor mounted tub filler and hand shower for ultimate relaxation

EVELYN

by ONNI

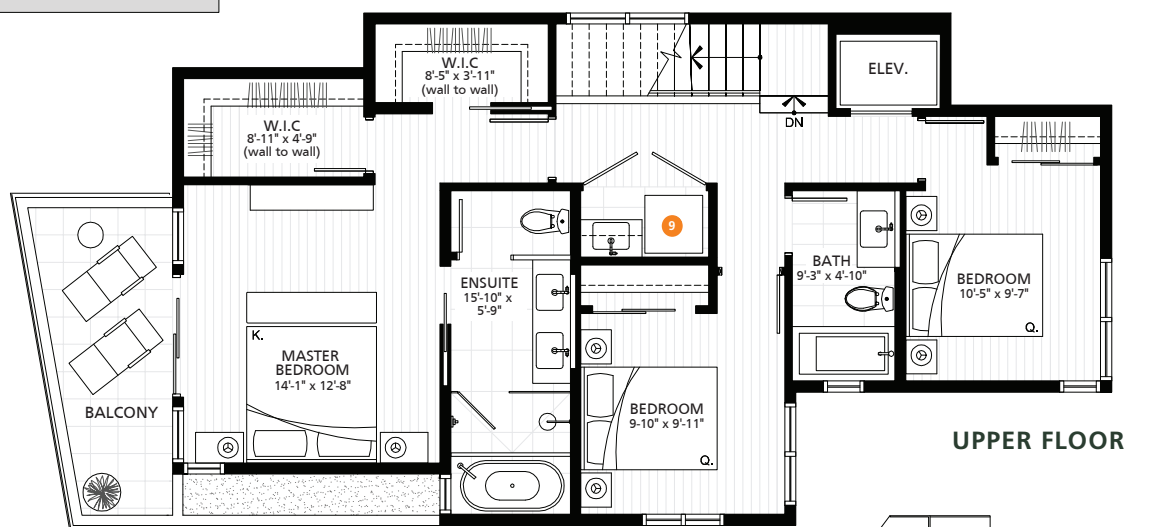
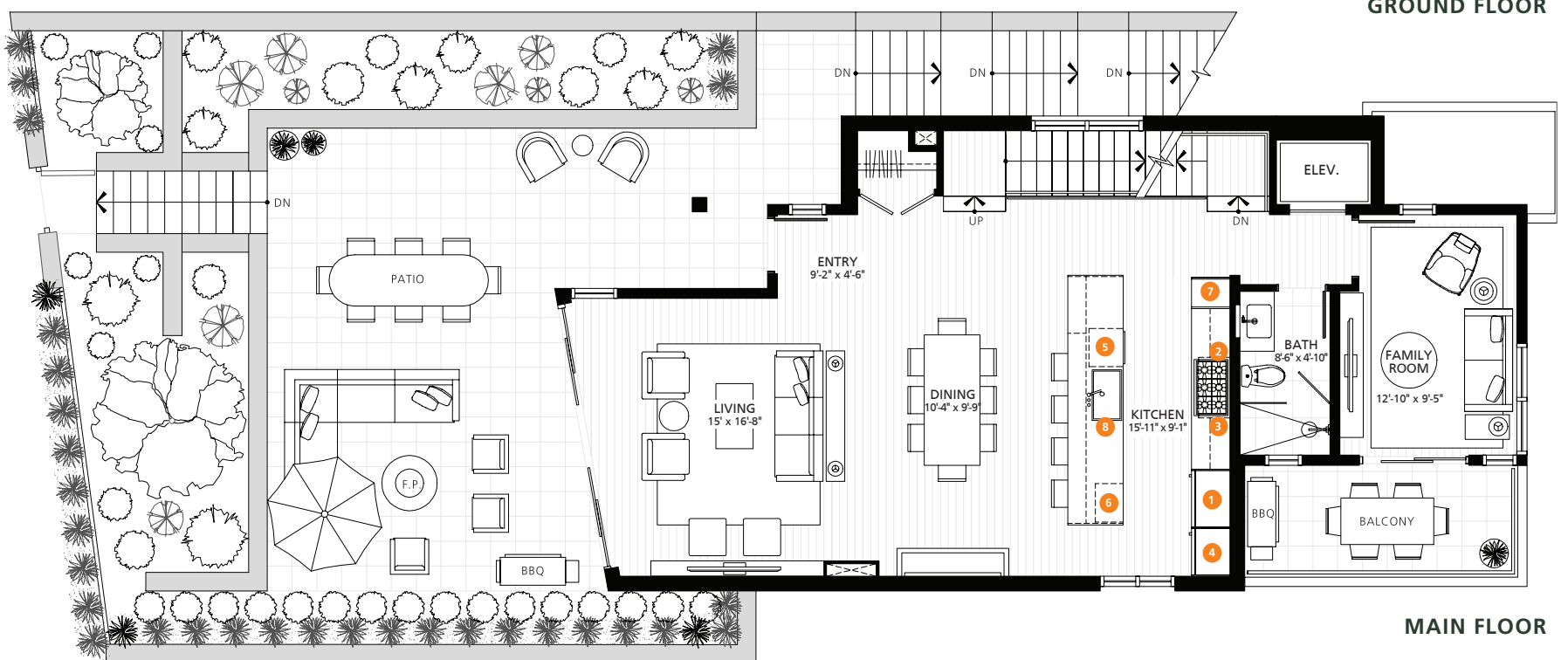
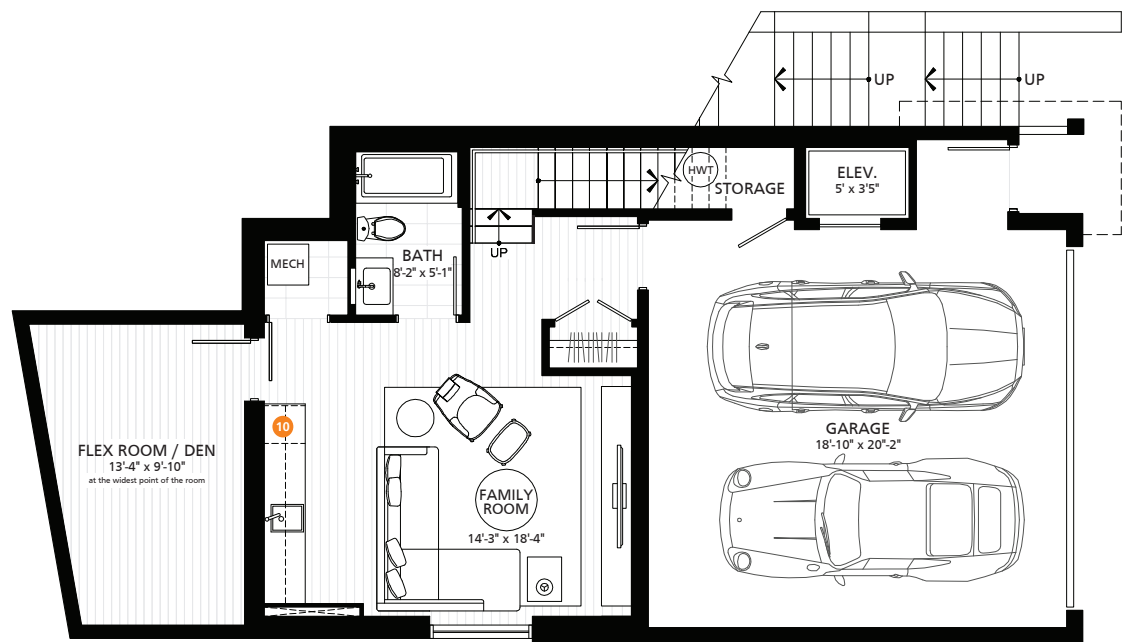
Plan SFH1

3 BEDROOM + FAMILY ROOM

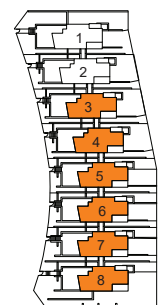
TOTAL AREA 3,475 SF

2,720 SF
INDOOR AREA

755 SF
OUTDOOR AREA



- 1 36" Sub-Zero Integrated Refrigerator
- 2 36" Wolf Gas Range with 6 burners
- 3 36" Faber Slim Line Hood Fan
- 4 30" Sub-Zero Integrated Wine Fridge
- 5 Cove Integrated Dishwasher
- 6 Panasonic Microwave
- 7 Pantry
- 8 Sink Disposal
- 9 Full Size Maytag Stacked Washer & Dryer
- 10 24" Undercounter Beverage Fridge



Everything at Your Fingertips

Surrounded by sea, mountains and greenery, enjoy immediate access to the natural beauty of the North Shore. With Park Royal, Ambleside Beach, Cypress Mountain, and Downtown Vancouver all a stone's throw away, living at Evelyn means endless access to all of life's daily conveniences.

With no shortage of things to do, living at Evelyn offers seamless access to year-round activities from sailing, skiing, golfing, biking, and hiking. Only a short walk from Park Royal Shopping Centre, Vancouver's second largest shopping destination, the retail and dining options are unlimited with over 300 stores, services and restaurants to choose from.



Our Past. Your Future.



The Onni Group is one of North America's leading private real estate developers, with extensive experience designing, developing, building and managing innovative projects. As a fully integrated company that directly oversees every step in the development process, Onni has built over 15,000 homes in the past decade.

In addition, the company owns and manages 18.4 million sq.ft. of commercial property, and over 11,200 rental apartment units and has an additional 28 million sq.ft. of space in different phases of development. With offices in Vancouver, Toronto, Chicago, Los Angeles, Seattle, Phoenix and Mexico, Onni continues to expand and diversify into new markets throughout North America.

Each home at Evelyn is backed by a comprehensive 2-5-10 year National Home Warranty that provides 2 full years in-home coverage for workmanship and materials, 5-year water penetration coverage and 10-year structural coverage for added peace of mind.